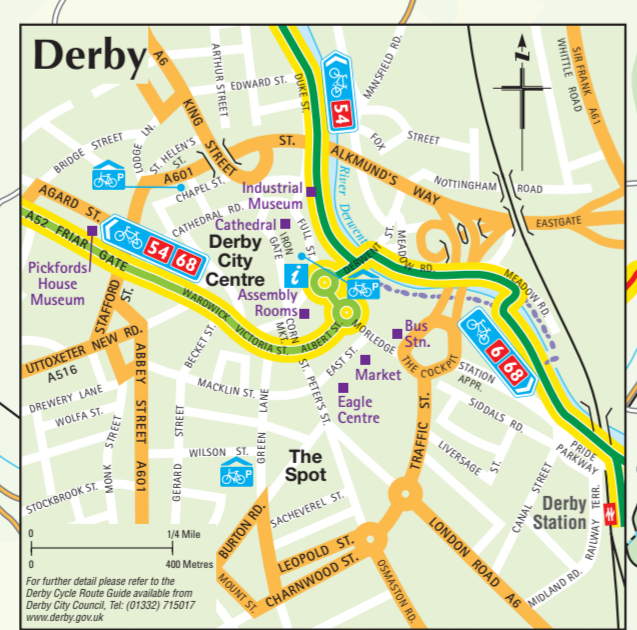
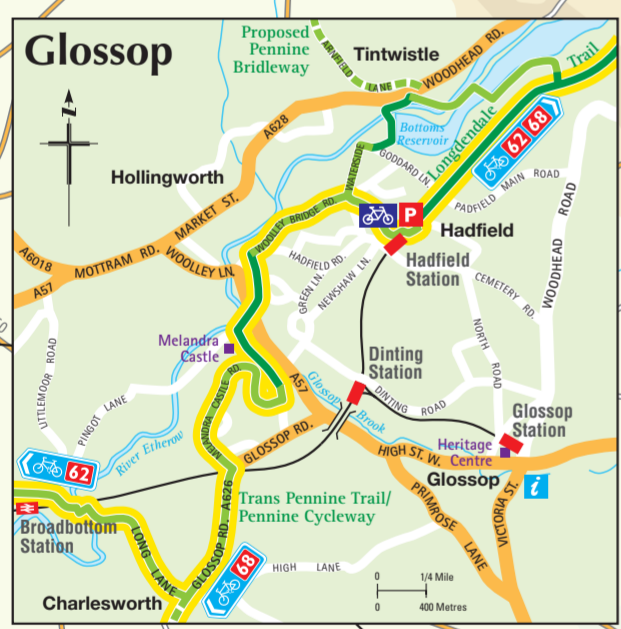
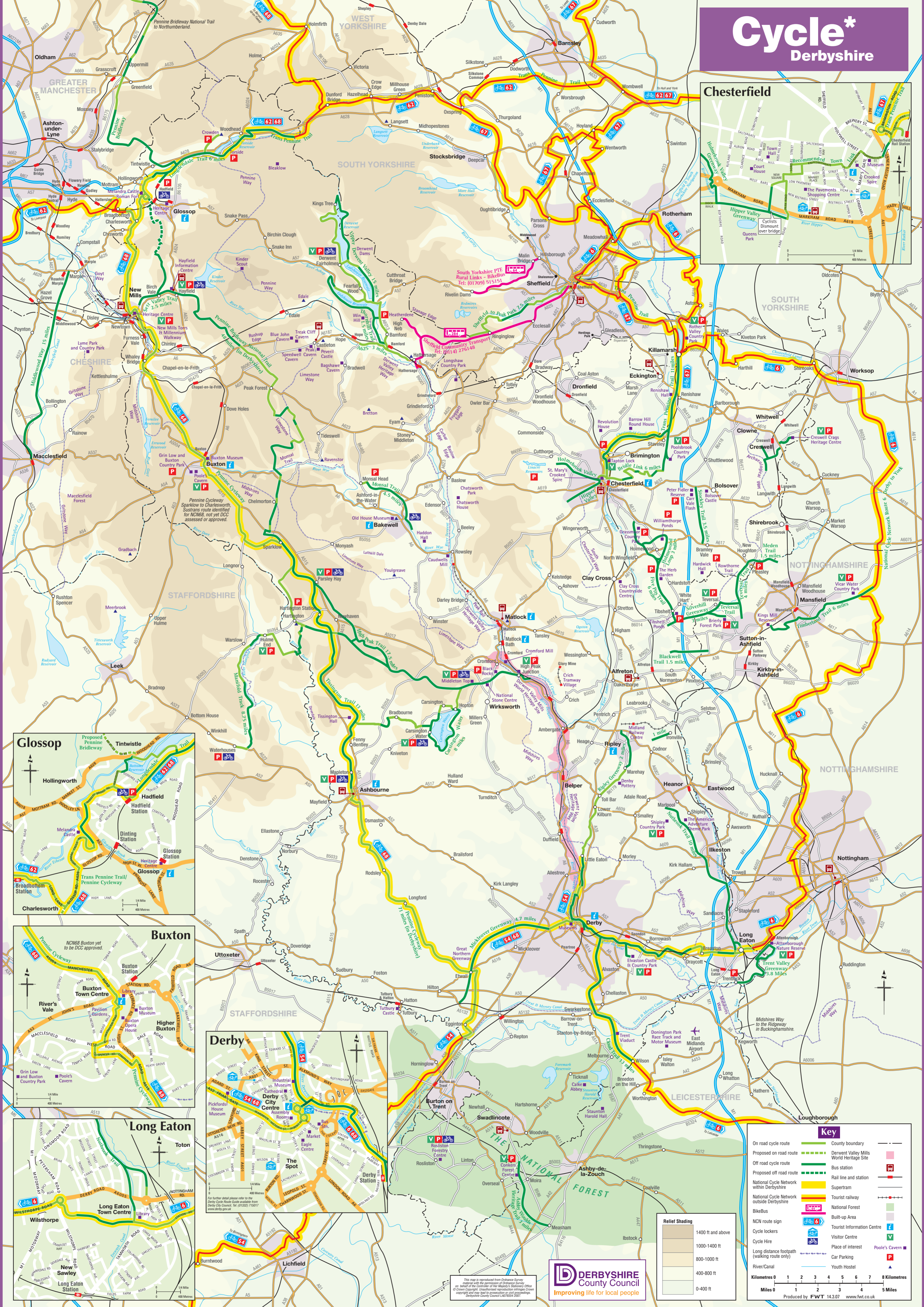


# Cycle\* Derbyshire



**Key**

- On road cycle route
- Proposed on road route
- Off road cycle route
- Proposed off road route
- National Cycle Network within Derbyshire
- National Cycle Network outside Derbyshire
- BikeBus
- NCN route sign
- Cycle lockers
- Cycle Hire
- Long distance footpath (walking route only)
- River/Canal
- County boundary
- Derwent Valley Mills World Heritage Site
- Bus station
- Rail line and station
- Supertram
- Tourist railway
- National Forest
- Built-up Area
- Tourist Information Centre
- Visitor Centre
- Place of Interest
- Car Parking
- Youth Hostel
- Poole's Cavern

**Relief Shading**

- 1400 ft and above
- 1000-1400 ft
- 800-1000 ft
- 400-800 ft
- 0-400 ft

**DERBYSHIRE County Council**  
Improving life for local people

**Scale:**  
Kilometres 0 1 2 3 4 5 6 7 8  
Miles 0 1 2 3 4 5

Produced by FWT 14.3.07 www.fwt.co.uk

This map is reproduced from Ordnance Survey material with the permission of Ordnance Survey on behalf of the Controller of Her Majesty's Stationery Office. © Crown Copyright. Database right reserved. Ordnance Survey copyright and may be used in conjunction with other copyrighted material. Derbyshire County Council 14/06/04 0404